

Endocrine system: adrenaline and ADH

<http://mravagnan.cumbresblogs.com/2018/03/14/endocrine-system-adrenaline-and-adh/>

1. **Study the effects of adrenaline and ADH after reading [this link](#).**

Act: a- Use bullet points to summarise the effects of adrenaline.

Adrenaline:

- Produced by adrenal glands
- In general, small amount of it is produced
- maintains normal blood pressure
 - Raises blood sugar levels to change glycogen into glucose
 - causes fatty tissues to release fat in blood
 - Increases the heart rate
 - Increases blood flow to muscles
 - Decreased blood flow to skin and intestines
 - Widens the bronchioles
 - dilates the pupil

b- Describe 3 situations in which adrenaline is secreted. Post a picture to show the examples

Adrenaline is secreted in situations like: family problems, work-related problems and also by the fact of lacking money



2. Draw a flow chart to show the effects of ADH:

– when there is **TOO LITTLE WATER** in the body.

– when there is **MUCH WATER** in the body.

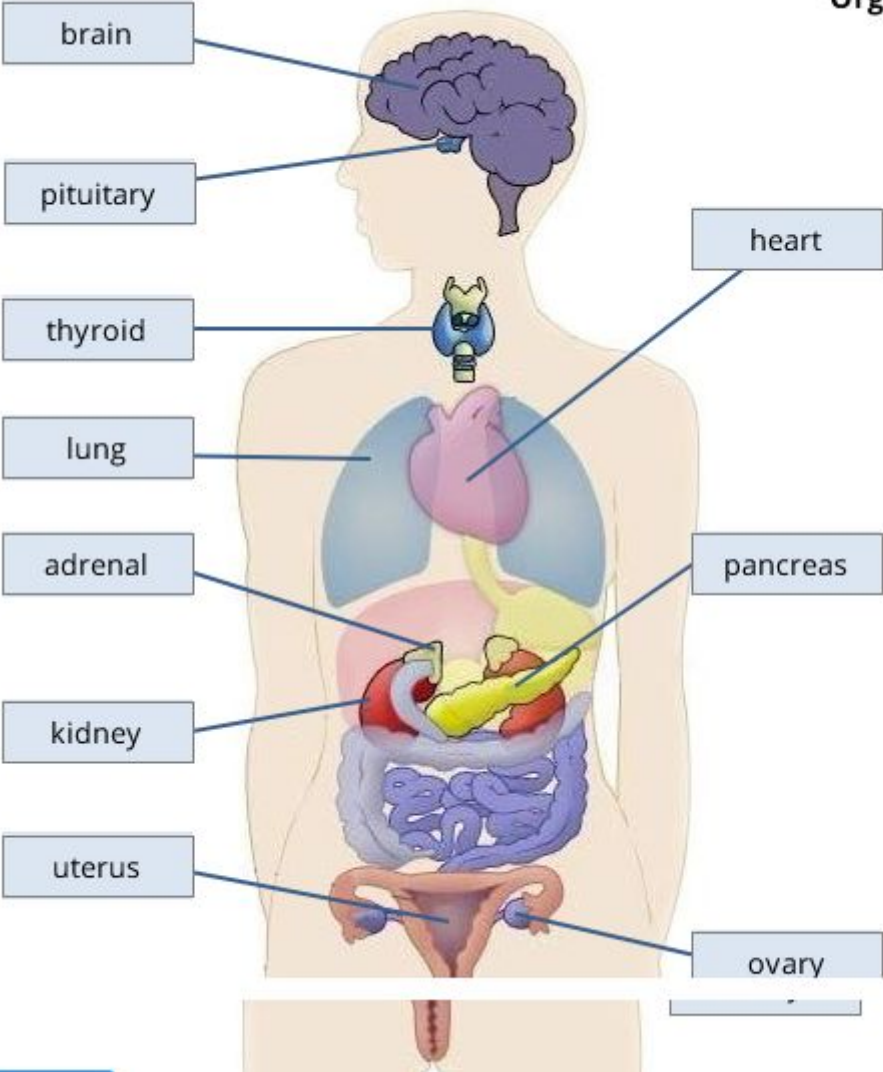
ADH:

controls the amount of water in the body

- Hypothalamus detects if there is too little water in the blood:
 - Hypothalamus sends message to the pituitary → pituitary releases ADH → ADH travels to the kidneys **in order to save more water** **How?**
 - (urine will be more concentrated) → Level of blood increases as water is produced by respiration
- Hypothalamus detects if there is high level of water in blood
 - Hypothalamus sends message to the pituitary → production of ADH stops → kidneys won't save that much water → urine becomes dilute → level of water begins to fall towards the ideal level

3- Solve the quiz from [this webpage](#). Take a screenshot and post it.

Organs



2. Match the endocrine gland with the correct hormone: [drag and drop the endocrine glands]

Endocrine gland	Hormones produced
Pituitary	- growth hormone, FSH and LH
Adrenal	- adrenaline
Testis	- testosterone
Pancreas	- insulin and glucagon
Ovary	- progesterone and oestrogen
Thyroid	- thyroxine

Try again

3. Match the hormones in column A with their correct functions from column B: [drag and drop the hormones]

Column A

Column B

Progesterone	- causes thickening of the uterus' lining.
Growth hormone	- affects the growth of the long bones.
Insulin	- controls the level of blood glucose.
FSH	- stimulates the production of eggs.
ADH	- makes the kidneys save water.
Testosterone	- causes the production of sperm.
HRT	- relieves the symptoms of the menopause.
Adrenaline	- speeds up the heart rate.

Try again